

Test Results

CogScreen-Aeromedical Edition

by
Gary G. Kay, PhD

Subject Name : Test A Pilot
Session Number : 01
Session Completion Date : 08/13/2005

The interpretive information contained in this report should be viewed as only one source of hypotheses about the individual being evaluated. No decisions should be based solely on the information contained in this report. This material should be integrated with all other sources of information in reaching professional decisions about this individual.

This report is confidential and is intended for use by qualified professionals only. It should not be released to the individual being evaluated.

The validity of this report depends on administration in strict accordance with the CogScreen-AE Professional Manual. Also, note that not all brain disorders produce cognitive deficits that will be detected by CogScreen-AE. Furthermore, scores falling in the impaired range do not necessarily reflect brain dysfunction.

Copyright © 2003 CogScreen, LLC.
All rights are reserved.

Test Results

CogScreen-Aeromedical Edition

Demographics

NAME :	Test A Pilot	TEST DATE :	08/13/2005
DATE OF BIRTH :	12/12/1972	SESSION NUMBER :	01
AGE:	32	EXAMINER'S INITIALS:	C.S
SEX:	Male	HAND PREFERENCE :	Right
RACE :	Hispanic	OPTIONAL ID :	
YEARS OF EDUCATION :	12		
CURRENT OCCUPATION :	pilot		

Aviator Information

Actively Flying :	Y
Airline :	Aero Excelente
Current Aircraft :	A319
Rating :	First Officer
Total Flight Hours Logged :	12000
Pilot License Type :	ATP
Medical Certificate Class :	1
Special Medical Issuance :	
Reason for Special Medical Issuance :	

Reason for Aviation Related Referral

Referral Source :	Airline	Problem Upgrading :	Y
Initial Medical Certification :		Other Aviation Related :	
Medical Re-Certification :		Selection :	
Proficiency Check :			
Transition Training :			

Reason for Medical Referral

Name of Referring Doctor :		Psychiatric :	
Alcohol Related :		Other Med/Psych :	
Head Injury :		Medication Question :	
HIV Related :			
Neurologic :			

Medical/Psychiatric History

Hypertension :	Y	Head Injury :	
Kidney Disease :		Brain Tumor :	
HIV :		Stroke :	
Diabetes :		Seizure Disorder :	
Liver Disease :		Alcoholism :	
Heart Disease :		Anxiety Disorder :	

Report for : Test A Pilot

Session Completion Date : 08/13/2005

Date Printed : 8/13/2005

Respiratory Disease :

Depressive Disorder :
Attention Deficit Disorder :
Learning Disability :

Current Diagnoses:

Current Medications: Inderal

LRPV SCORE

Logistic Regression Estimated Probability of Brain Dysfunction.

The following probability score (range 0 - 1.0) was generated using a model derived from a forward step-wise *A higher LRPV score indicates a higher probability of brain dysfunction.* The LRPV score is for classification estimates only. Note that LRPV is significantly correlated with age and likelihood-ratio logistic regression analysis. does not predict the magnitude or severity of dysfunction.

LRPV = 0.0045

BASE RATE ANALYSIS

Determines the number of scores falling at or below the 5th percentile and 15th percentile compared to a selected normative comparison group:

	Number of scores at or below 5th percentile	Percentile	T-Score
Speed	0	> 40	> 47
Accuracy	3	5	34
Thruput	1	35	46
Process	0	> 35	> 45

	Number of scores at or below 15th percentile	Percentile	T-Score
Speed	0	> 80	> 57
Accuracy	5	10	37
Thruput	1	75	57
Process	1	72.5	56

TAYLOR AVIATION FACTOR SCORES

<u>Factor</u>	<u>Description</u>	<u>Z-Score</u>	<u>T-Score</u>
Attribute Identification	Measure of deductive reasoning.	0.54	55.45
Motor Coordination	Measure of motor coordination under speeded conditions.	-0.08	50.83
Visual Association Memory	Measure of visual learning and recall.	1.47	64.66
Speed/Working Memory	Measure of visual scanning, perceptual speed, and working memory.	6.13	111.32
Tracking	Measure of visual/psychomotor tracking accuracy.	-1.09	60.85

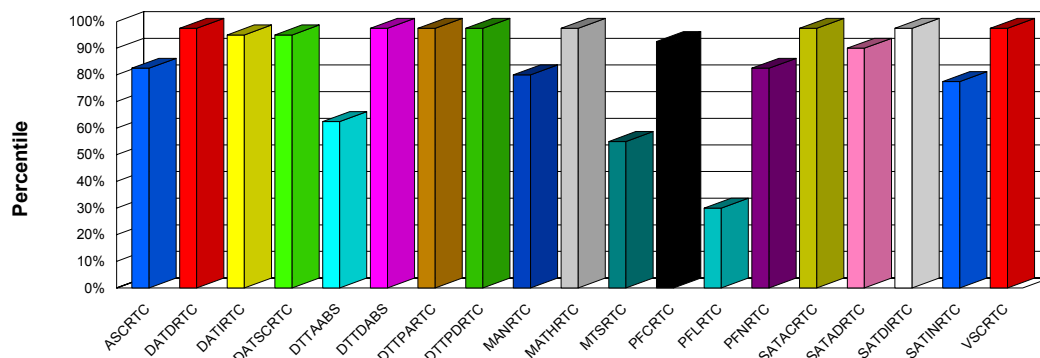
Report for : Test A Pilot

Session Completion Date : 08/13/2005

Date Printed : 8/13/2005

CogScreen Speed Scores

Baseline Database : **Major US Carriers - Age Group 1, <35**



Variables

VARIABLE	DESCRIPTION	SCORE	PERCENTILE	T-SCORE
ASCRTC	Auditory Sequence Comp	0.63	82.50	59
DATDRTC	Visual Monitoring Dual	0.36	97.50	71
DATIRTC	Visual Monitoring Alone	0.30	95.00	66
DATSCRTC	Div Attn Seq Comp	1.39	95.00	66
DTTAABS	Tracking Alone	12.55	62.50	53
DTTDABS	Tracking Dual	10.48	97.50	71
DTTPARTC	Previous Number Alone	0.06	97.50	71
DTTPDRTC	Previous Number Dual	0.12	97.50	71
MANRTC	Manikin	1.29	80.00	58
MATHRTC	Math	1.30	97.50	71
MTSRTC	Matching to Sample	1.17	55.00	51
PFCRTC	Pathfinder Combined	0.64	92.50	65
PFLRTC	Pathfinder Letter	0.68	30.00	45
PFNRTC	Pathfinder Number	0.56	82.50	59

Report for : Test A Pilot

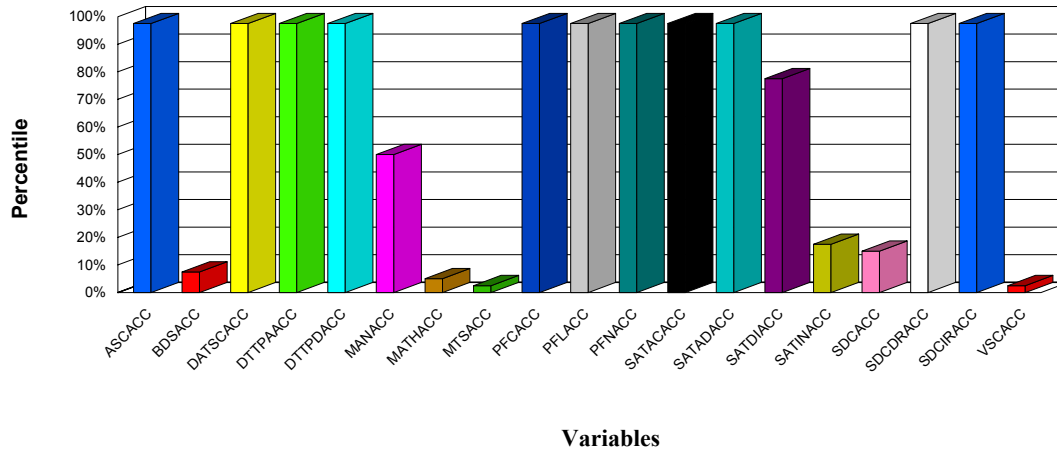
Session Completion Date : 08/13/2005

Date Printed : 8/13/2005

SATACRTC	Arrow Color	0.41	97.50	71
SATADRTC	Arrow Direction	0.41	90.00	62
SATDIRTC	Discovery	0.52	97.50	71
SATINRTC	Instruction	0.59	77.50	58
VSCRTC	Visual Sequence Comp	0.13	97.50	71

CogScreen Accuracy Scores

Baseline Database : **Major US Carriers - Age Group 1, <35**



Variables

VARIABLE	DESCRIPTION	SCORE	PERCENTILE	T-SCORE
ASCACC	Auditory Sequence Comp	100.00	97.50	71
BDSACC	Backward Digit Span	50.00	7.50	36
DATSCACC	Div Attn Seq Comp	97.22	97.50	71
DTPPAACC	Previous Number Alone	100.00	97.50	71
DTPDACC	Previous Number Dual	100.00	97.50	71
MANACC	Manikin	91.67	50.00	50
MATHACC	Math	40.00	5.00	34
MTSACC	Matching to Sample	10.00	2.50	31
PFCACC	Pathfinder Combined	100.00	97.50	71
PFLACC	Pathfinder Letter	100.00	97.50	71
PFNACC	Pathfinder Number	100.00	97.50	71
SATACACC	Arrow Color	100.00	97.50	71
SATADACC	Arrow Direction	100.00	97.50	71
SATDIACC	Discovery	76.56	77.50	58
SATINACC	Instruction	93.75	17.50	41
SDCACC	Symbol Digit Coding	96.67	15.00	40
SDCDRACC	Symbol Digit Delayed Recall	100.00	97.50	71
SDCIRACC	Symbol Digit Immediate Recall	100.00	97.50	71
VSCACC	Visual Sequence Comp	65.00	2.50	31

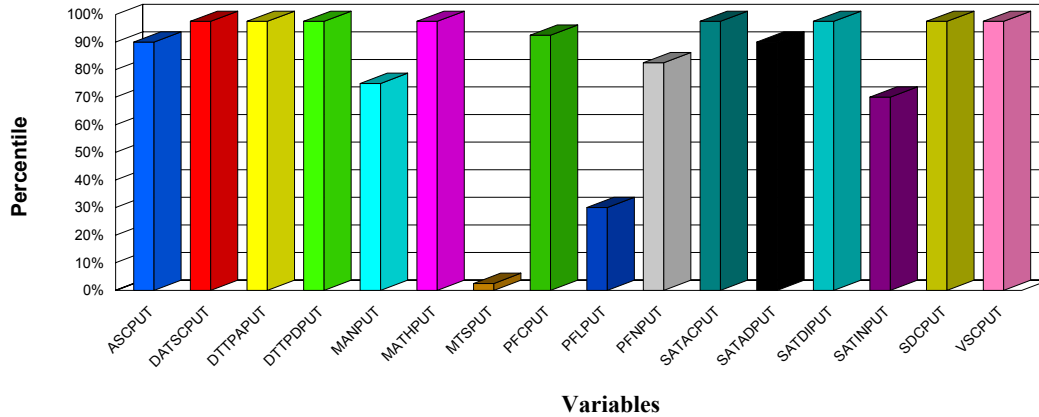
Report for : Test A Pilot

Session Completion Date : 08/13/2005

Date Printed : 8/13/2005

CogScreen Thruput Scores

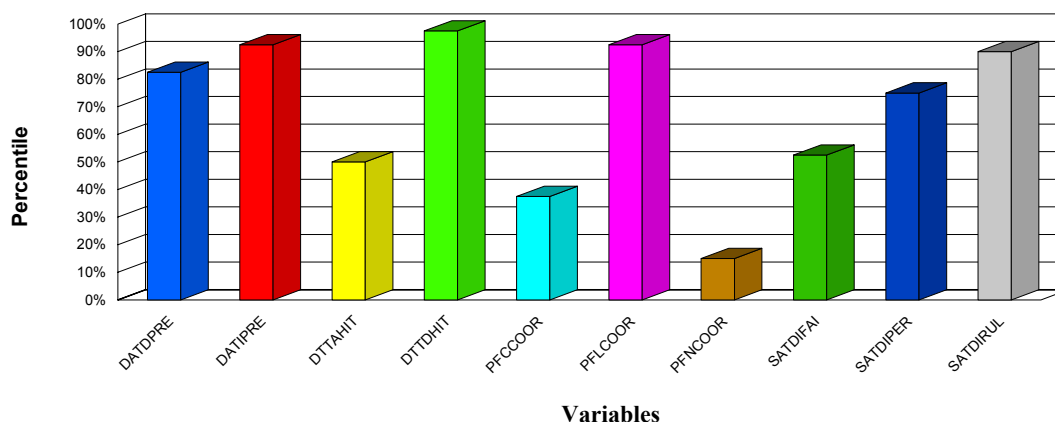
Baseline Database : **Major US Carriers - Age Group 1, <35**



VARIABLE	DESCRIPTION	SCORE	PERCENTILE	T-SCORE
ASCPUT	Auditory Sequence Comp	95.85	90.00	62
DATSCPUT	Div Attn Seq Comp	41.94	97.50	71
DTTPAPUT	Previous Number Alone	952.38	97.50	71
DTTPDPUT	Previous Number Dual	517.24	97.50	71
MANPUT	Manikin	42.60	75.00	57
MATHPUT	Math	18.45	97.50	71
MTSPUT	Matching to Sample	5.12	2.50	31
PFCPUT	Pathfinder Combined	94.04	92.50	65
PFLPUT	Pathfinder Letter	88.50	30.00	45
PFNPUT	Pathfinder Number	106.38	82.50	59
SATACPUT	Arrow Color	147.06	97.50	71
SATADPUT	Arrow Direction	144.93	90.00	62
SATDIPUT	Discovery	88.17	97.50	71
SATINPUT	Instruction	94.86	70.00	55
SDCPUT	Symbol Digit Coding	57.37	97.50	71
VSCPUT	Visual Sequence Comp	304.69	97.50	71

CogScreen Process Scores

Baseline Database : **Major US Carriers - Age Group 1, <35**



VARIABLE	DESCRIPTION	SCORE	PERCENTILE	T_SCORE
DATDPRE	Indicator Dual Premature Resp	1.00	82.50	59
DATIPRE	Indicator Alone Premature Resp	1.00	92.50	65
DTTAHIT	Boundary Hits - Single Task	1.00	50.00	50
DTTDHIT	Boundary Hits – Dual Task	0.00	97.50	71
PFCCOOR	Combined Coordination	1.46	37.50	47
PFLCOOR	Letter Coordination	1.08	92.50	65
PFNCOOR	Number Coordination	1.67	15.00	40
SATDIFAI	Discovery - Fail to Maintain Set	1.00	52.50	51
SATDIPER	Discovery - Perseverative Errors	1.00	75.00	57
SATDIRUL	Discovery - Rule Shifts	9.00	90.00	62

Calculated CogScreen Scores

VARIABLE	DESCRIPTION	SCORE
BDSMSPAN	BACKWARD DIGIT SPAN MAXIMUM SPAN	3.00
B DSTOTAL	BACKWARD DIGIT SPAN TOTAL SCORE	2.00
DATILAPS	DIVIDED ATTENTION TEST MONITOR ALONE LAPSES	1.00
DATDLAPS	DIVIDED ATTENTION TEST MONITOR DUAL LAPSES	0.00
SDCRT	SYMBOL DIGIT CODING RESPONSE SPEED	1.01
SDCCOR	SYMBOL DIGIT CODING CORRECT RESPONSES	29.00
VSCSDRT	SPEED VARIABILITY VISUAL SEQUENCE COMP	0.58
MATHSDRT	SPEED VARIABILITY MATH	0.32
SDCSVRT	SPEED VARIABILITY SYMBOL DIGIT CODING	0.38
MTSSDRT	SPEED VARIABILITY MATCHING TO SAMPLE	0.37
MANSVRT	SPEED VARIABILITY MANIKIN	1.05
DATISVRT	SPEED VARIABILITY VISUAL MONITORING ALONE	0.47
DATDSVRT	SPEED VARIABILITY VISUAL MONITORING DUAL	0.41
DATSCSDRT	SPEED VARIABILITY SEQUENCE COMP DUAL	0.48
ASCSDRT	SPEED VARIABILITY AUDITORY SEQUENCE COMP	0.18
PFNSVRT	SPEED VARIABILITY PATHFINDER NUMBER	0.25
PFLSDRT	SPEED VARIABILITY PATHFINDER LETTER	0.37
PFCSVRT	SPEED VARIABILITY PATHFINDER COMBINED	0.24
SATINSVRT	SPEED VARIABILITY SAT INSTRUCTION	0.43
DTPNASVRT	SPEED VARIABILITY PREVIOUS NUMBER ALONE	0.12
DTPNDSVRT	SPEED VARIABILITY PREVIOUS NUMBER DUAL	0.10

Report for : Test A Pilot

Session Completion Date : 08/13/2005

Date Printed : 8/13/2005

Multitasking Impact Scores

VARIABLE	DESCRIPTION	SCORE
DIFINDRTC	DIVIDED ATTN TEST INDICATOR SPEED	0.05
DIFINDPRE	DIVIDED ATTN TEST INDICATOR PREMATURE HITS	0.00
DIFSCRTC	DIVIDED ATTN TEST SEQUENCE COMP SPEED	1.26
DIFSCACC	DIVIDED ATTN TEST SEQUENCE COMP ACCURACY	32.22
DIFSCPUT	DIVIDED ATTN TEST SEQUENCE COMP THRUPUT	-262.75
DIFTRERR	DUAL TASK TEST TRACKING ERROR	-2.06
DIFTRHIT	DUAL TASK TEST TRACKING BOUNDARY HITS	-1.00
DIFPNRTC	DUAL TASK TEST PREVIOUS NUMBER SPEED	0.05
DIFPNACC	DUAL TASK TEST PREVIOUS NUMBER ACCUR	0.00
DIFPNPUT	DUAL TASK TEST PREVIOUS NUMBER THRUPUT	-435.14

'Speed Score' Percentile Comparison Report

Optional Comparison Report was not selected.

Variables

'Accuracy Score' Percentile Comparison Report

Optional Comparison Report was not selected.

Variables

'Thruput Score' Percentile Comparison Report

Optional Comparison Report was not selected.

Variables

'Process Score' Percentile Comparison Report

Report for : Test A Pilot

Session Completion Date : 08/13/2005

Date Printed : 8/13/2005

Optional Comparison Report was not selected.

Variables

Report for : Test A Pilot

Session Completion Date : 08/13/2005

Date Printed : 8/13/2005

**Copyright © 2003 CogScreen, LLC.
All rights reserved.**

Page -1 of 1